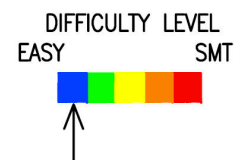




## QRPBuilder BNC Antenna Mount/Adapter kit



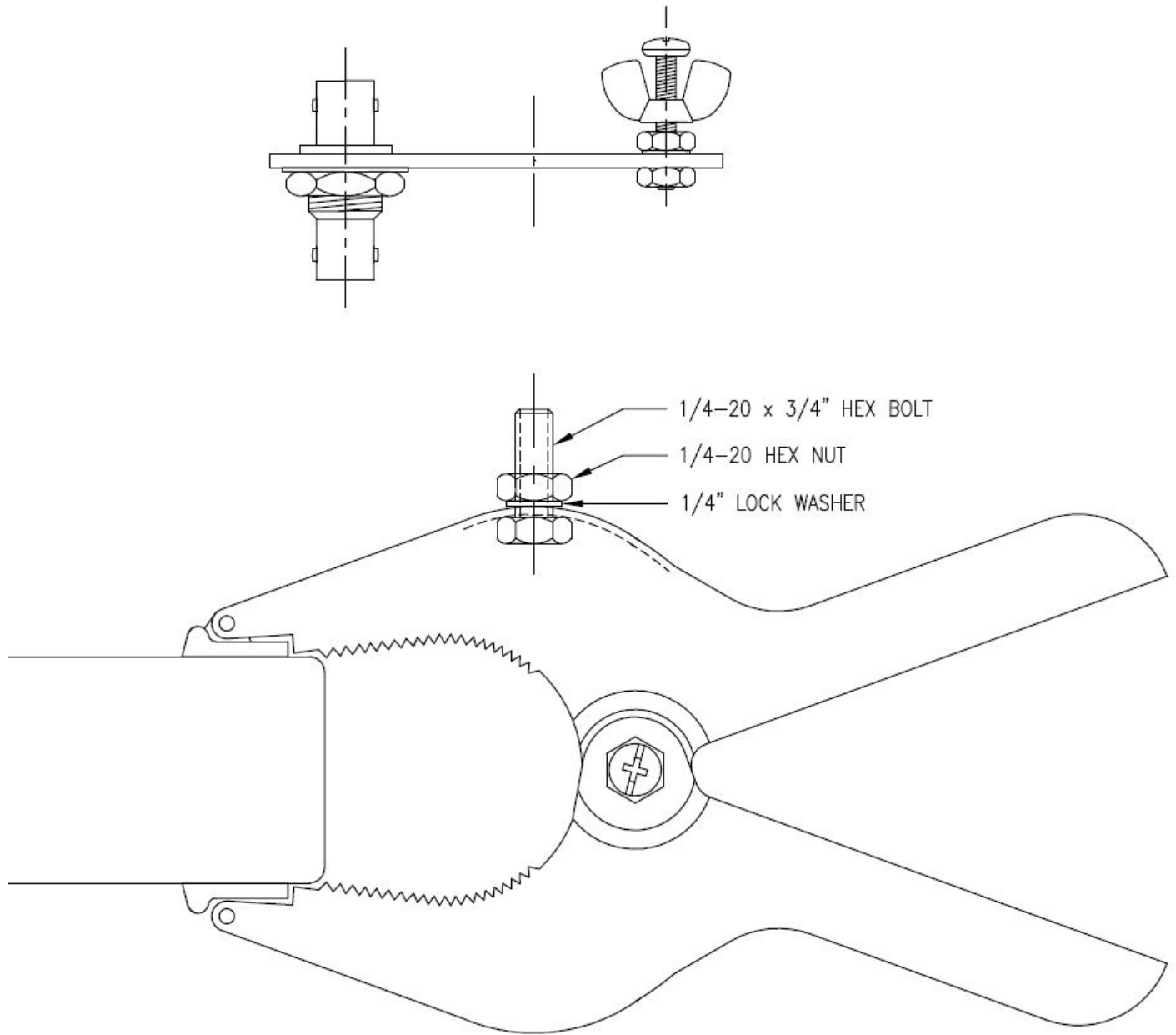
First, familiarize yourself with the parts and check for all the components. If a part is missing, please contact us and we will send one. Email [qrpbuilder@gmail.com](mailto:qrpbuilder@gmail.com) to request a part, or for any questions.

### Parts List

- 1 – BNC Antenna Mount/Adapter PCB
- 1 – BNC female/female bulkhead connector
- 1 – 4-40 x 1/4" SS pan head screw
- 1 – 8-32 x 3/4" SS pan head screw
- 2 – 8-32 SS nut
- 1 – 8-32 SS wing nut
- 2 - #8 SS internal tooth lock washer
- 1 – 1/4-20 x 3/4" SS hex head bolt
- 2 - 1/4-20 SS nut
- 1 – 1/4" SS lock washer

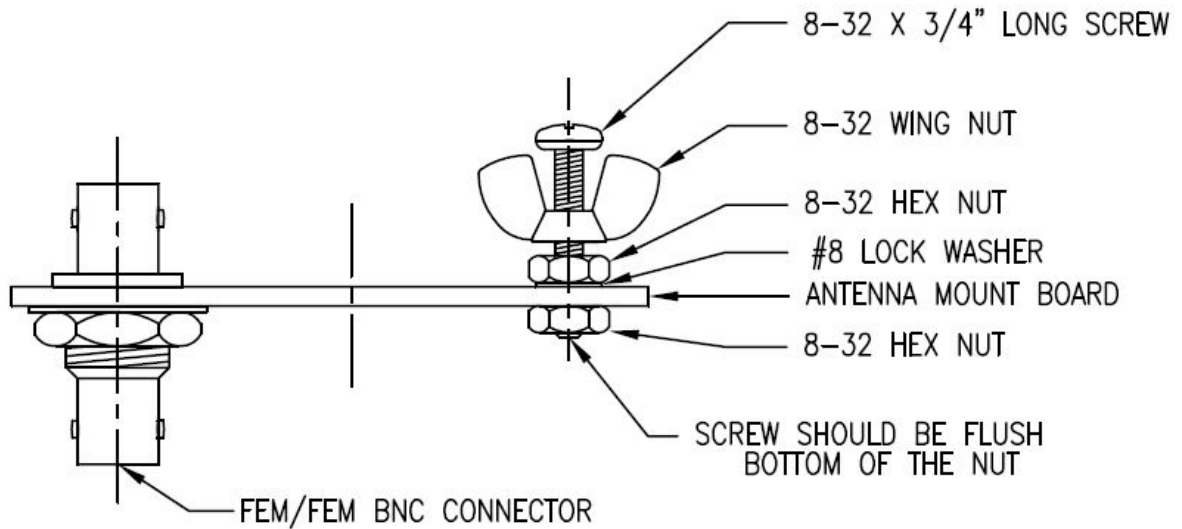
The tools required are: Phillips screwdriver, pliers or appropriate wrench, and 1/4" drill. The instructions below will insure a successful outcome. Please read them all carefully before proceeding. Open the parts bag carefully, small parts are difficult to find in the carpet.

The graphic below shows the scope of this project.

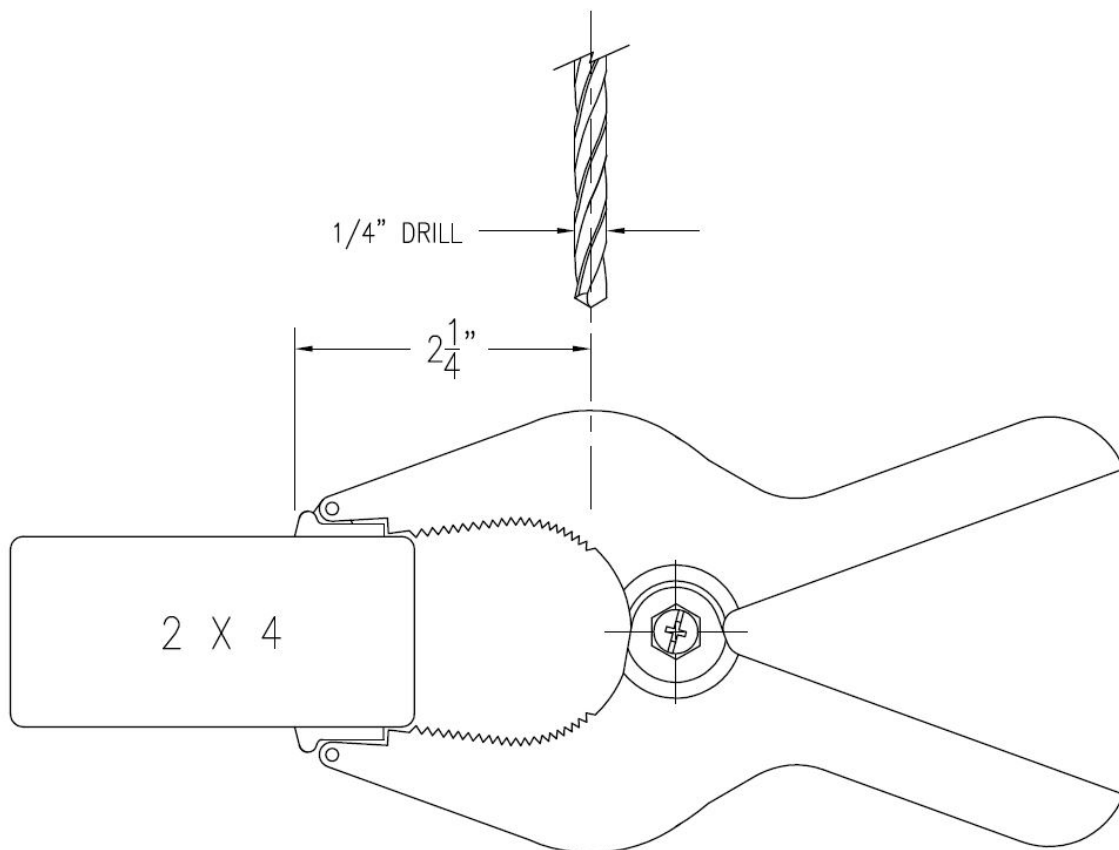


## Assembly:

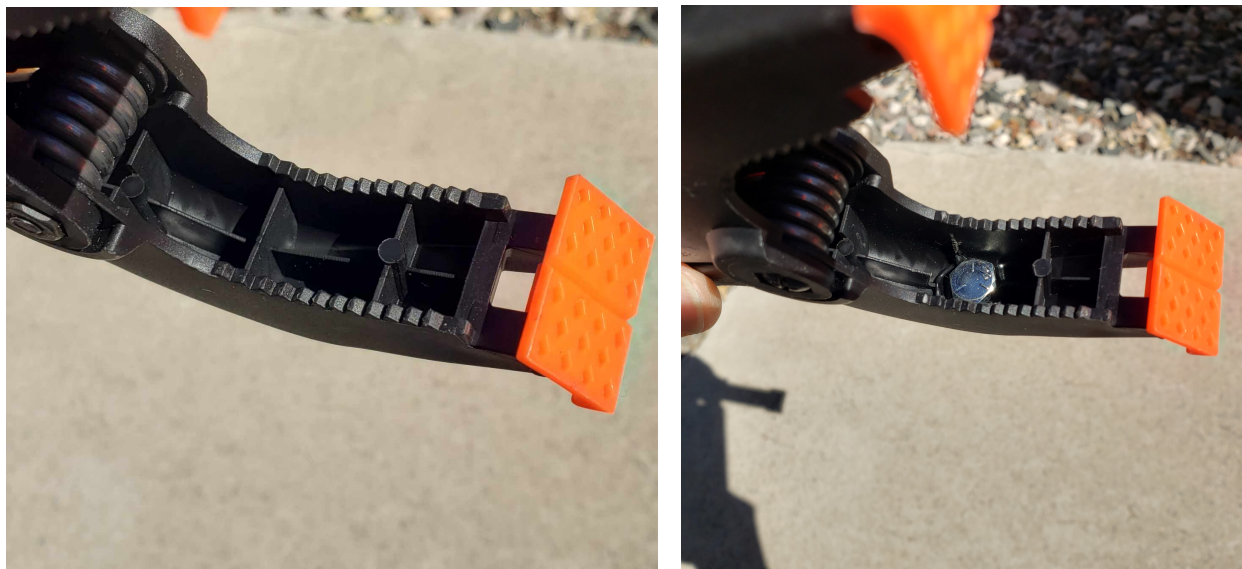
- [ ] Assemble the counterpoise/radial connection hardware onto the plate as in the order shown. This will prevent the wing nut from ever being lost.



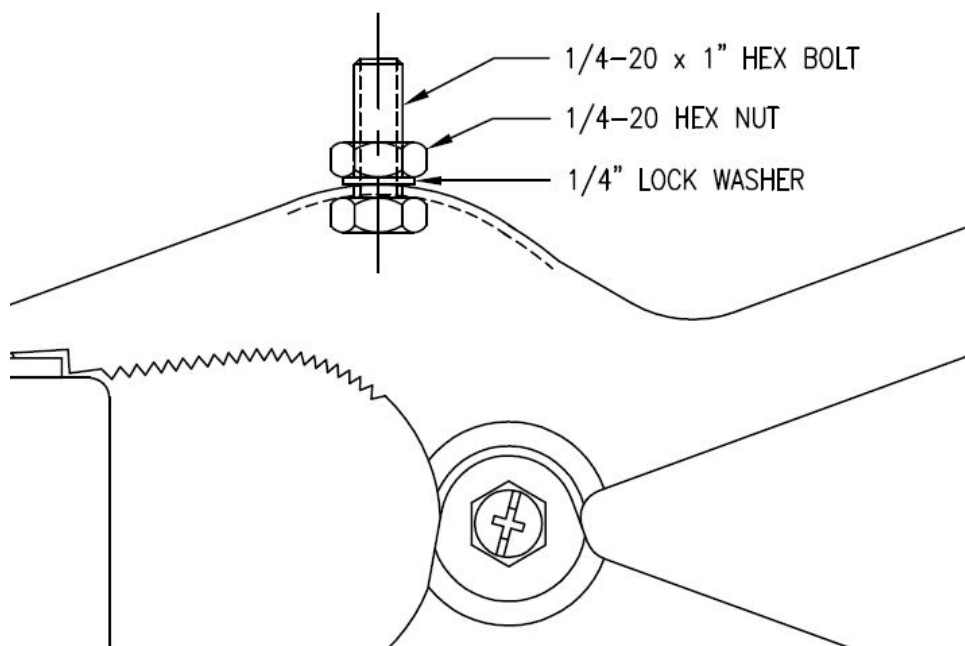
- [ ] The fem/fem BNC connector is secured next with the attached nut and lockwasher.
- [ ] Drill the 1/4" hole in one handle of the clamp as shown. Use a piece of a 2x4 or similar thickness in the jaws of the clamp. This will approximate a normal clamping thickness so the bolt, when installed, will be vertical.

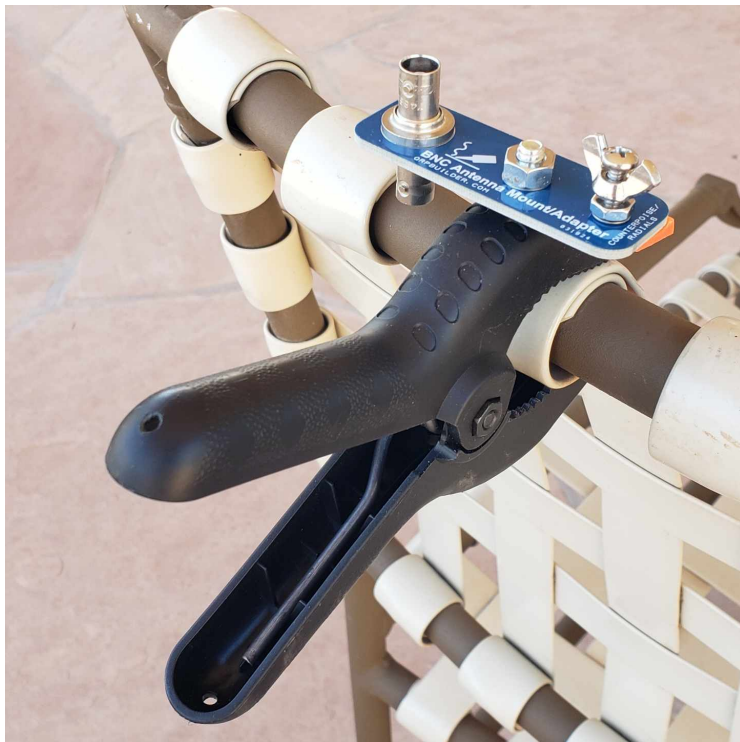


- [ ] There is some plastic ribbing on the inside that needs to be removed with needle nose pliers to allow the 1/4" hex bolt to lie flush with the inside of the clamp handle. Break off enough for the clearance of the bolt head.

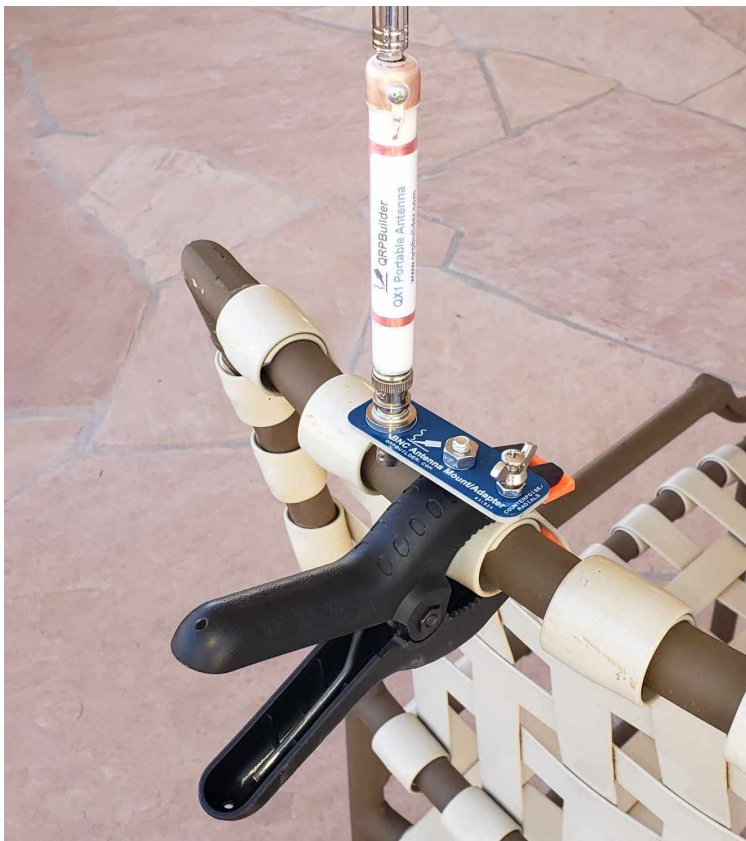


- [ ] Install the 1/4-20 hex bolt from the inside of the clamp, secured by the lock washer and 1/4-20 nut on the outside as shown.





Clamp completed.



Clamp used with the QX1 Antenna, or similar design





With the addition of a small angle bracket, it is easily adapted to a vertical post mount.