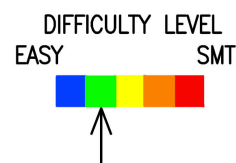
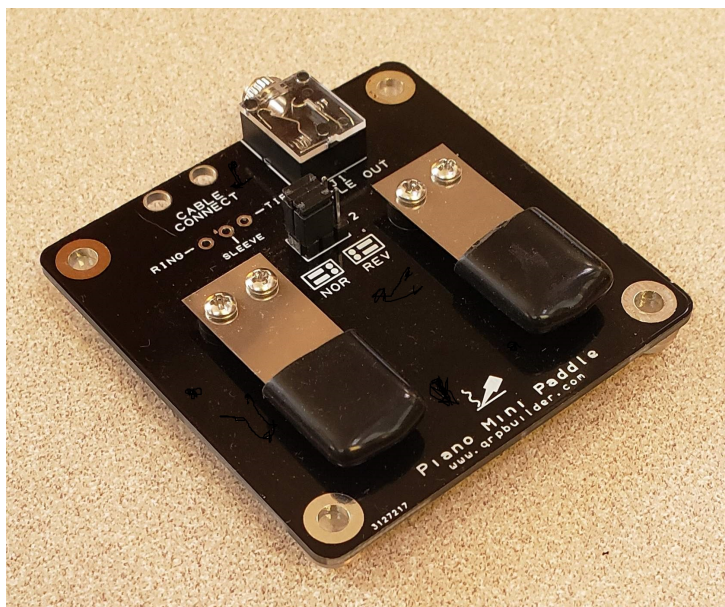




## QRP Builder Piano Mini Paddle kit



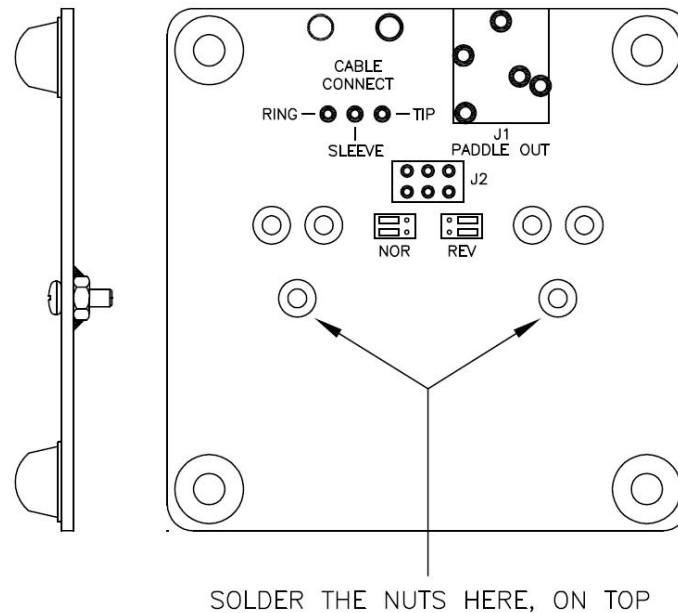
First, familiarize yourself with the parts and check for all the components. If a part is missing, please contact us and we will send one. Be sure to check inside the vinyl caplug for any small screws or washers.

You must use the **SUPPORT** button on the product page to request a part, or for any questions.

### Parts List

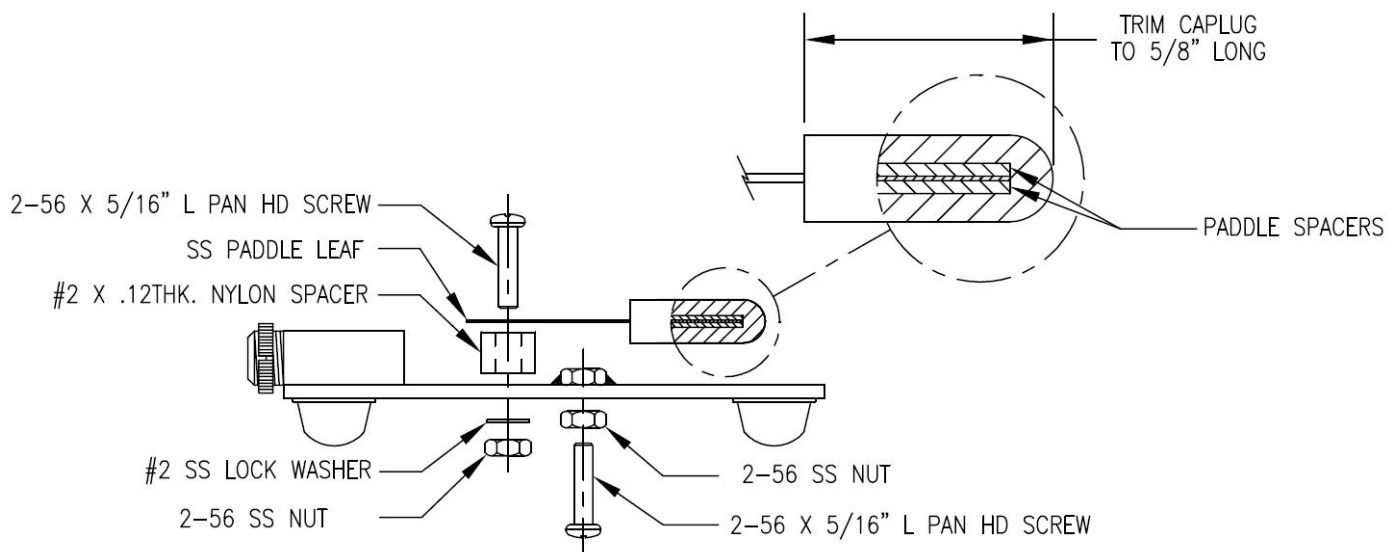
- 1 – QRPBuilder Piano Paddle PCB
- 6 – 2-56 x 5/16" L SS Phillips head screw
- 4 - #2 SS lock washer
- 2 – 2-56 brass nut
- 6 – 2-56 SS nut
- 4 - #2 x .12" thick nylon washer
- 2 – SS paddle leaf
- 1 - 1/2" wide x 3.0" L plastic shim
- 2 - 1/2" x 1" vinyl caplug
- 1 – J1, 3.5mm stereo pcb jack
- 1 – J2, 2x3 pin connector
- 2 – Berg connector (shunt)
- 4 – self adhesive rubber foot
- 1 – 3.5mm stereo plug
- 1 – sm. plastic tie

- [ ] Attach the four self adhesive rubber feet to the back of the pcb.
- [ ] Clean the surface of the **two** of the 2-56 brass nuts with an emery board or by rubbing them on a small piece of emery paper to prepare the surface for soldering to the pcb. Position them as shown in the graphic below, using the 2-56 SS screws, to hold in place, and solder the nuts to the **TOP** of the pcb. Remove the screws.



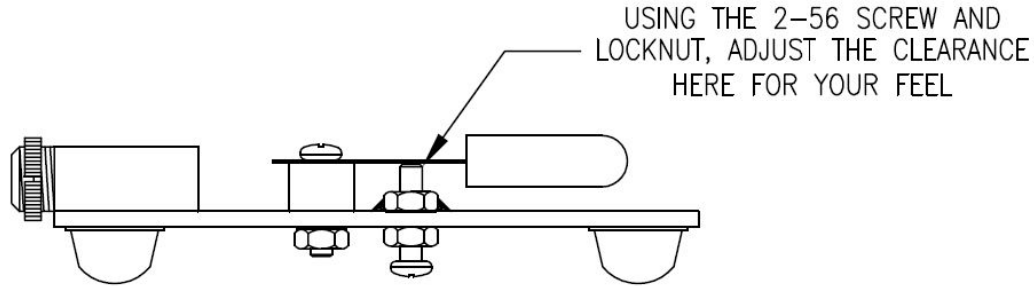
- [ ] Install J1, 3.5mm stereo pcb jack where indicated on the top of the board.
- [ ] Install J2, 2x3 pin connector where indicated on the top of the board.

*Assemble the mechanical components as shown using the graphic below.*

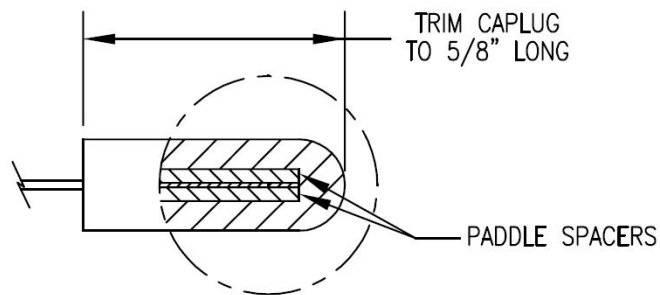


- [ ] Mount each Paddle Leaf, spaced off the pcb, with two .12" thick nylon spacers. Use the hardware in the order as shown in the graphic.

- [ ] Install the two 2-56 x 5/16" L contact screws and jam nuts from the bottom of the board as shown and adjust the clearance gap.



- [ ] Cut the vinyl caplug lever cover 5/8" long from the closed end with scissors or a razor knife. Cut the 1/2" wide plastic into four 9/16" long pieces. Sandwich the paddle lever between the plastic spacers and slide the caplug over the end of the paddle leaf.



### **Usage:**

The paddle can be set up for either finger to be "dit" or "dah". Simply reverse the jumpers as shown on the silkscreen. Accordingly the "tip" or "ring" of the 3.5mm jack can be either dit or dah depending on your selection. Sleeve is "common". The manual cable connection pads will also be affected by the jumper connections. We include a 3.5mm stereo plug and plastic tie for those that want to add their own custom cable.

The position of the paddle levers allow for stable operation as is, however four corner holes are provided for securing to a heavier base if desired.

### **Notes:**

---

---

---

---

---

---

---

---